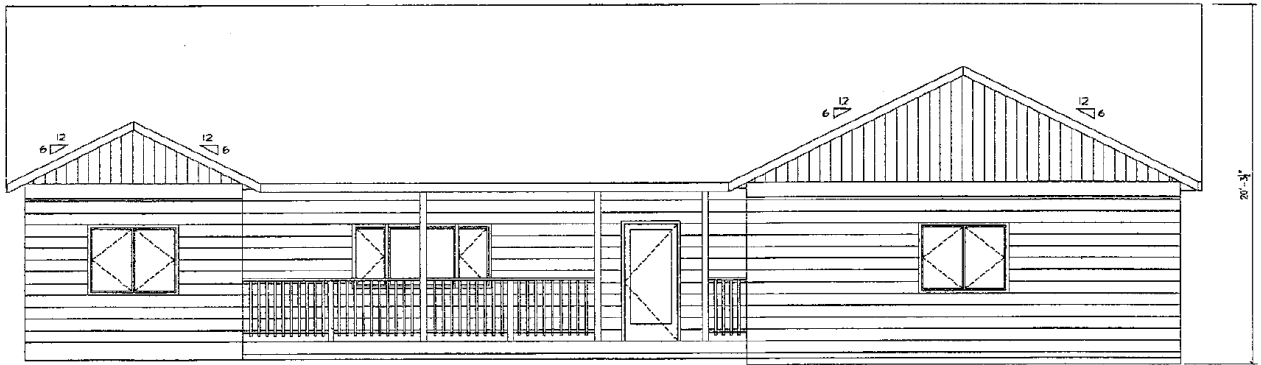


2419 Riata Rd

\$359,900



1 FRONT ELEVATION
1/4" = 1'-0"

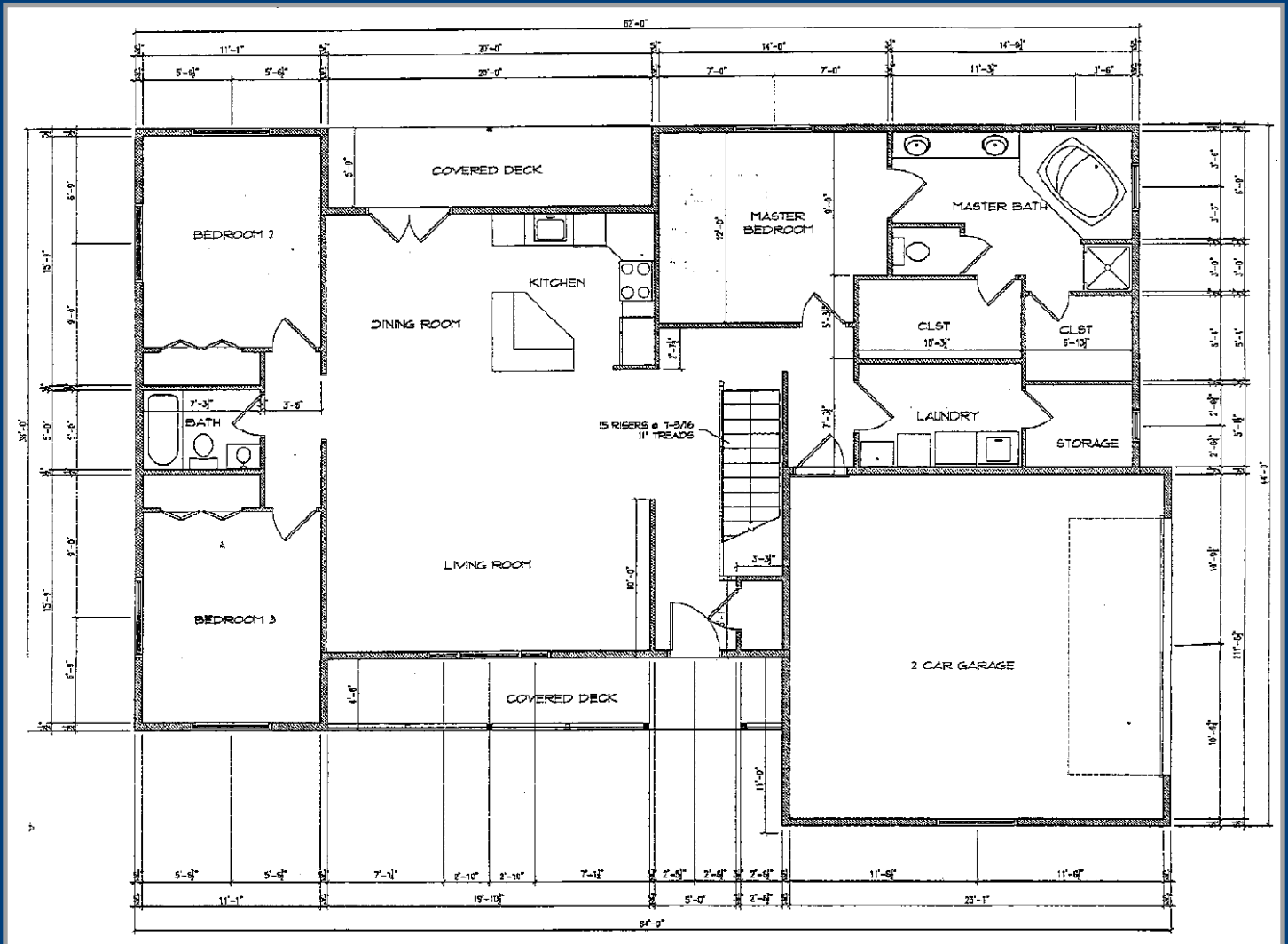
New, quality home in 44 Ranch currently under construction by Built-Well Construction. Nestled on a corner lot near the park, this spacious home features an open floor plan with approximately 1,794 sq. ft. of living space on the main level as well as a 768 sq. ft. unfinished basement for future expansion. Features include an attached double car garage, expansive covered front porch, central A/C, and main level laundry room with separate storage area. The kitchen includes gorgeous cabinetry, island and access to the rear covered patio off the dining area. The spacious great room features a vaulted ceiling and gas fireplace, while the private master bedroom offers vaulted ceilings, dual walk-in closets and en suite tiled bath with double vanity, shower and separate soaking tub. Two additional bedrooms are located on the opposite end of the home along with a second full bath. MLS 21707390 MissoulaLand.com



Kory Mytty
406.544.8071
kmytty@windermere.com
MissoulaLand.com

Windermere
REAL ESTATE





3 Bedrooms 2 Bathrooms

Double car garage

Main living area: 1,794 sq ft

Unfinished basement: 768 sq ft

Lot size: 6,552 sq ft

Zoning: 44 Ranch Special Zoning District

Schools: Hellgate Elementary, Big Sky High School

Included Items: Range, range hood, dishwasher, refrigerator, auto garage door opener, central A/C

The information contained herein has been obtained through sources deemed reliable but cannot be guaranteed as to its accuracy. Any/all information including size of house and lot are subject to verification. Actual plans may vary.